



Kenya Power

*The Kenya Power & Lighting Co. Ltd
Central Office – P. O. Box 30099 Nairobi, Kenya
Telephone – 254-02-3201000 – Telegrams 'ELECTRIC'
Telex No:22253 Fax No:254-02-337351
Stima Plaza, Kolobot Road*

Our Ref: KP1/9AA-2/PT/28/ICT/14-15/JM/rmm

11th May, 2015

Dear Sir/Madam,

ADDENDUM (III) TO TENDER NO KP1/9AA-2/PT/28/ICT/14-15/JNM FOR DESIGN SUPPLY, INSTALLATION & COMMISSIONING OF ADSS FIBER OPTIC CABLE

Following some discrepancies noted in; Schedule of requirements, Price Schedule of Goods, write-up and tabulated summary of Fibre Optic Cable (FOC), amendments are made in addendum (III) to the specified provisions of the Tender document for Design, Supply, Installation and Commissioning of ADSS Fibre Optic Cable. Save where amended by the terms of this addendum, the Principal Tender Document, Addendum I, Addendum II shall continue to be in full force and effect. The provisions of this addendum shall be deemed to have been incorporated in and shall read as part of the principal Tender Document.

1. SECTION V-SCHEDULE OF REQUIREMENTS

The section has been amended and item 1(a) revised upwards to read 265 Km. Item 9 where under unit for fault locator there was a NO and quantity 1 is hereby clarified and fault locator is the header for the items under it (OTDR, Power Meter a& Power source). Find a summary in below table.

5.1.1 LOT 1 (Nairobi North, Nairobi South and Mt. Kenya)

Item No. Affected	Brief Description	Unit of Measure	Quantity
1	Fiber Optic Cable		
a)	48 core ADSS Fiber Optic cable to be installed below 66kV, 33kV and 11kV lines	KM	265
9.	Fault locator		
a)	OTDR	NO	1
b)	Optical Power Meter	NO	1
c)	Optical Power Source	NO	1

5.1.2 LOT 2 (North Eastern and Coast)

The section has been amended and item 1(a) revised upwards to read 283Km. Item 9 where under unit for fault locator there was a NO and quantity 1 is hereby clarified and fault locator is the header for the items under it (OTDR, Power Meter & Power source). Find a summary in below table.

Item No. Affected	Brief Description	Unit of Measure	Quantity
1.	Fiber Optic Cable		
a)	48 core ADSS Fiber Optic cable to be installed below 66kV, 33kV and 11kV lines	KM	283
9.	Fault locator		
a)	OTDR	NO	1
b)	Optical Power Meter	NO	1
c)	Optical Power Source	NO	1

5.1.3 LOT 3 (North Rift and West Kenya)

The section has been amended and item 1(a) revised upwards to read 492 Km. Item 9 where under unit for fault locator there was a NO and quantity 1 is hereby clarified and fault locator is the header for the items under it (OTDR, Power Meter & Power source). Find a summary in below table.

Item No. Affected	Brief Description	Unit of Measure	Quantity
1.	Fiber Optic Cable		
a)	48 core ADSS Fiber Optic cable to be installed below 66kV, 33kV and 11kV lines	KM	492
9.	Fault locator		
a)	OTDR	NO	1
b)	Optical Power Meter	NO	1
c)	Optical Power Source	NO	1

5.1.4 LOT 4 (Central Rift)

Item 9 where under unit for fault locator there was a NO and quantity 1 is hereby clarified and fault locator is the header for the items under it (OTDR, Power Meter & Power source). Find a summary in below table.

Item No. Affected	Brief Description	Unit of Measure	Quantity
9.	Fault locator		
a)	OTDR	NO	1
b)	Optical Power Meter	NO	1
c)	Optical Power Source	NO	1

2. SECTION VI- SCHEDULE OF PRICES

The items below under tables of price schedule have been amended to reflect the correct quantities

6.1 PHASE THREE LOT 1 (Nairobi North, Nairobi South and Mt. Kenya)

1	2	3	4	5	6	7
Item	Brief Description	Unit of Measure	Qty	Country of Origin	Unit price (DPP VAT Incl.)	Total price (DPP VAT Incl.)
1.	Fiber Optical Cables					
a)	48 core ADSS cable to be installed below the 66kV, 33kV and 11 kV lines	KM	265			
2.	Splice Boxes					
b)	Spare 3-way-Splice boxes with a minimum capacity of 96 terminations	No.	40			
9.	Fault locator					
a)	OTDR	NO	1			
b)	Optical Power Meter	NO	1			
c)	Optical Power Source	NO	1			

6.2 PHASE THREE LOT 2 (North Eastern and Coast)

1	2	3	4	5	6	7
Item	Brief Description	Unit of Measure	Qty	Country of Origin	Unit price (DPP VAT Incl.)	Total price (DPP VAT Incl.)
1	Fiber Optical Cables					
a)	48 core ADSS cable to be installed below the 66kV, 33kV and 11 kV lines	KM	283			
2	Splice Boxes					
b)	Spare 3-way-Splice boxes with a minimum capacity of 96 terminations	No.	40			
9	Fault locator					

1	2	3	4	5	6	7
Item	Brief Description	Unit of Measure	Qty	Country of Origin	Unit price (DPP VAT Incl.)	Total price (DPP VAT Incl.)
a)	OTDR	NO	1			
b)	Optical Power Meter	NO	1			
c)	Optical Power Source	NO	1			

5.1.3 LOT 3 (North Rift and West Kenya)

1	2	3	4	5	6	7
Item	Brief Description	Unit of Measure	Qty	Country of Origin	Unit price (DPP VAT Incl.)	Total price (DPP VAT Incl.)
1	Fiber Optical Cables					
b)	48 core ADSS cable to be installed below the 66kV, 33kV and 11 kV lines	KM	492			
2	Splice Boxes					
b)	Spare 3-way-Splice boxes with a minimum capacity of 96 terminations	No.	50			
9	Fault locator					
a)	OTDR	NO	1			
b)	Optical Power Meter	NO	1			
c)	Optical Power Source	NO	1			

6.4 PHASE THREE LOT 4 (Central Rift)

1	2	3	4	5	6	7
Item	Brief Description	Unit of Measure	Qty	Country of Origin	Unit price (DPP VAT Incl.)	Total price (DPP VAT Incl.)
2	Splice Boxes					
b)	Spare 3-way-Splice boxes with a minimum capacity of 96 terminations	No.	50			
9	Fault locator					
a)	OTDR	NO	1			
b)	Optical Power Meter	NO	1			
c)	Optical Power Source	NO	1			

3, SECTION X- TECHNICAL SPECIFICATIONS

Proposed Links

Phase three will have 49 new proposed links as follows; LOT 1 has 265Km, LOT2 two has 283Km; LOT3 has 492Km and lastly LOT4 with 347.85Km after making corrections on some spurs that had been omitted. The bidder shall use the quantities in the schedule of requirements

10.4 PHASE THREE LOT 1

10.4.1 Nairobi North Region

10.4.1.1 From Ruaraka Substation to Ridgeways Substation an FOC of 9KM is to be installed. Three ODFs will be required. One 48 core ID ODF at Ruaraka Substation, one 48 core ID IDF at Ridgeways and one 96 core ID ODF at Ridgeways Substation.

10.4.3 Mt. Kenya Region

10.4.3.2. At Old Kutus, there is no control building. Two 96 core OD ODF will be installed. At Sagana Substation, there is no control building. Two 96 core OD ODF will be installed.

10.4.3.3 For Muranga Office, the diagram is provided, approximate Number of Poles=30 Approximate Span Length=60m. Find attached diagram in appendix (a)

10.5.1.3 From Ruiru 66/33/11KV Substation a 23.5KM FOC will be installed to Mangu 132/66 Substation using the 66KV line. Detailed diagram of this line is attached in appendix (d)

10.5 PHASE THREE LOT 2

10.5.2 Coast region

10.5.2.4 For Likoni Office, the diagram is provided. Approximate number of poles=30, Approximate span length=40m. Find attached diagram in appendix (b)

10.6 PHASE THREE LOT 3

10.6.1 North Rift Region

10.6.1.2 A 96 core OD ODF will be installed at Moi Barracks 33/11Kv Substation

10.6.1.4 At Kapenguria KPLC offices, 48 cores ID and 48 cores OD ODF's will be installed. At Kapenguria SS one 96 core OD ODF will be installed.

10.10 PHASE THREE TABULATED SUMMARY, OF APPROXIMATE FOC DISTANCE

10.10.1 LOT 1 (Nairobi north, Nairobi South and Mt. Kenya)

REGION	ORIGIN	DESTINATION	APPROXIMATE DISTANCE (KM)					Total
			132 kV	66kV Line	33 kV Line	11 kV Line	LV line	

			Line					
MT. KENYA								
	Spur at 33Kv and 11Kv Junction	Murang'a KPLC Office				2		2
LOT 1 TOTAL								265

10.10.2 LOT2 (North Eastern, Coast)

REGION	ORIGIN	DESTINATION	APPROXIMATE DISTANCE (KM)					Total
			132 kV Line	66kV Line	33 kV Line	11 kV Line	LV line	
COAST								
	Likoni SS	Likoni KPLC Office				1.5		1.5
LOT 1 TOTAL								282.32

10.10.3 LOT3 (North Rift, West Kenya)

The Spur from Majengo to Mbale has approximately 5KM and about 55 poles running on 33KV line. Longest spans are approximately 120m. Find attached diagram in drawing in appendix (c)

REGION	ORIGIN	DESTINATION	APPROXIMATE DISTANCE (KM)					Total
			132 kV Line	66kV Line	33 kV Line	11 kV Line	LV line	
WEST KENYA								
	Malakisi SS	Malakisi KPLC Office				2		2
	Mumias SS	Mumias KPLC Offices				4		4
	Nyamira Substation	Nyamira RF Site				6.8		6.8
	Spur at Majengo	Mbale KPLC Office			5			5
LOT 3 TOTAL								491.35

10.18.1 Phase Three LOT 1

Table Error! No text of specified style in document.-AList of ODF required for Phase Three; LOT 1.

REGION	LOCATION	OUTDOOR ODF		INDOOR ODF		Cable Approach Cable (m)	Conduit	
		48 cores capacity	96 cores capacity	48 cores capacit y	96 cores capacit y		HDPE (m)	PVC (m)
NAIROBI NORTH								
	Ongata Rongai Office	0	1	1	0	150	0	15

4. TENDER CLOSING DATE

The tender closing date remains the same on 21st May, 2015 at 10.00 am. All the other terms and conditions remain as per the tender document.

Yours faithfully,

For: KENYA POWER & LIGHTING COMPANY LIMITED


BERNARD NGUGI

AG. GENERAL MANAGER, SUPPLY CHAIN



Appendix (a)

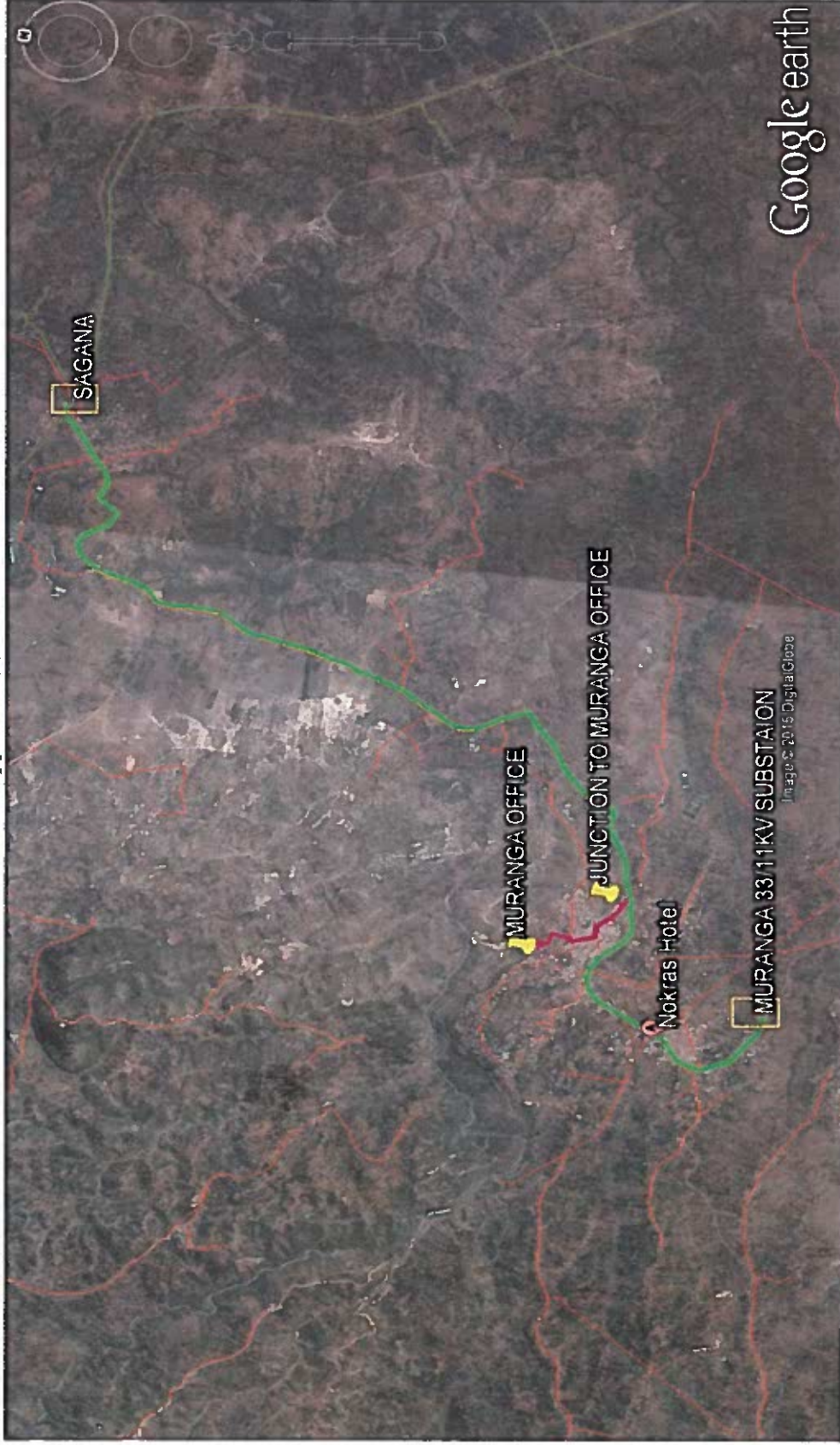


Figure of showing Proposed FOC from Murang'a Junction to Murang'a Office.

Appendix (b)



Figure of showing Proposed FOC from Likoni Substation to Likoni KPLC Office

Appendix(c)



Figure of showing Proposed FOC From Magengo Junction to Mbale KPLC Office

